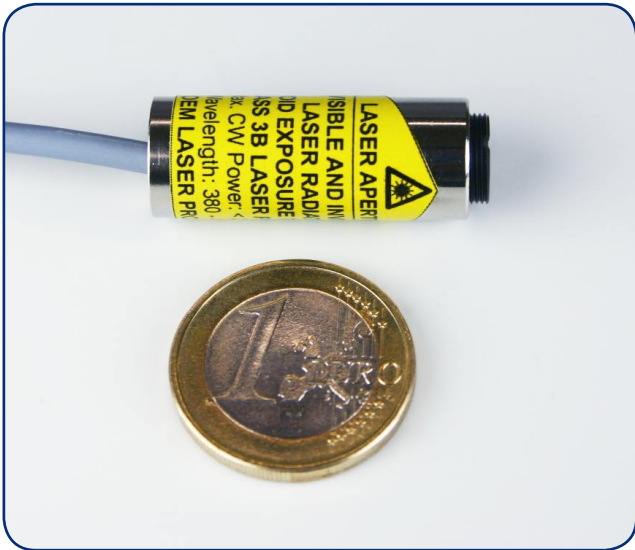




# Blue High-Power Laser Diode OEM Modules

MONOPOWER™-405-50/100/150-MM



### Features

- High Power in the Blue Region
- Well Collimated Beam
- Long Life Time
- Extremely Compact

### Options

- Housing with TEC Cooling
- Temperature Tuning of the Central Wavelength ( $\pm 1$  nm)
- Variable Output Power
- Compliance with IEC/EN 60825-1 Laser Safety Standards (e.g. for Non-OEM Customers)

### Laser Specifications (Typical Values)

Wavelength	405 nm ( $\pm 5$ nm)
Output Power	50, 100 or 150 mW (depending on the model)
Beam Spot	Elliptical, 2 × 3 mm at 1 m distance
Divergence	1 mrad
Spectral Width (FWHM)	< 0.3 nm
Weight	12 g
Dimensions	Ø 12 × 33 mm
Laser Class	Class 3B Laser Product

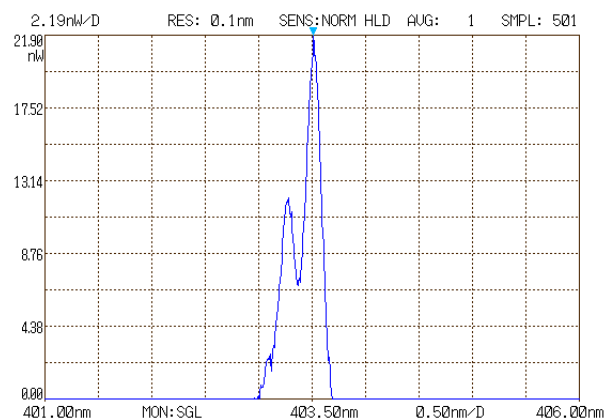
### Laser Diode Driver Specifications

Voltage Input	Universal, 100 - 230 V AC
Power Consumption	< 5 W
Dimensions (W×H× L)	105 × 44 × 105 mm <sup>3</sup>

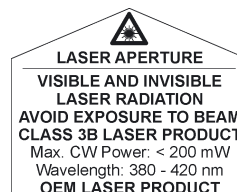


#### Laser Safety Note

These OEM modules are sold to other manufacturers for use as components in their own laser systems. They are not subject to IEC/EN 60825-1, since the final product will itself be subject to the applicable laser safety standards.



Typical Emission Spectrum at 50 mW Optical Power



ALPHALAS GMBH  
Bertha-von-Suttner-Str. 5  
D-37085 Goettingen  
Germany

TEL +49 - 551 - 77 06 147  
FAX +49 - 551 - 77 06 146  
E-MAIL [sales@alphalas.com](mailto:sales@alphalas.com)  
WEB [www.alphalas.com](http://www.alphalas.com)

*LASERS, OPTICS, ELECTRONICS.*  
*MADE IN GERMANY.*  
[WWW.ALPHALAS.COM](http://WWW.ALPHALAS.COM)



Options and further specifications are available upon request. Specifications in this data sheet are subject to change without notice. We reserve the right to make any changes that do not deteriorate the specified performance of our products. No responsibility for typing or printing errors. - Please note: Our products are intended for expert users only. They must not be used where injury to persons or damage to property may occur. Our products must not be used for medical or any other *in vivo* applications. They must not be used in critical applications (e.g. in life support systems, in aviation, in nuclear facilities, in weapon systems, in safety or security systems, etc.).