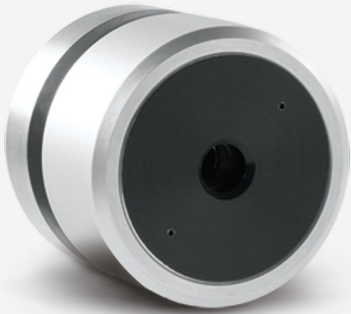




QUAD-9-MT-E

4-quadrant laser position sensing detector for pulsed lasers.



PRODUCT FAMILY KEY FEATURES

MEASURE, TRACK AND ALIGN

Follow your laser beam wherever it goes.

4-CHANNEL DETECTORS

Unique quadrant detector technology senses laser beam position with high resolution.

FOR CW, PULSED AND HIGH REP RATE LASERS

- QUAD-E: energy per pulse from μJ to mJ
- QUAD-P: powers from μW to mW

FROM UV TO FIR AND THZ

Absorbers to cover all sources, from UV to millimeter wavelengths

LARGE AREA SENSORS

9 mm and 20 mm square detectors

FAST USB 2.0 CONNECTION

Ensures full speed tracking

INCLUDES APPLICATION SOFTWARE

Complete LabView application software included, with many features

COMPATIBLE STAND

[STAND-D-233](#)



SPECIFICATIONS

MEASUREMENT CAPABILITIES

Spectral range	0.1 - 3000 μm
Typical rise time	150 μs
Typical power sensitivity	2000 V/W
Maximum repetition rate	1000 Hz
Minimum beam size ¹	4.5 mm \varnothing
Minimum position resolution	1 μm
Maximum measurable energy	20 mJ
Noise equivalent energy	0.5 μJ
Maximum pulse width	2.5 μs

1. For optimal performance

DAMAGE THRESHOLDS

Maximum average power density ¹	0.1 W/cm ²
Maximum energy density ²	50 mJ/cm ²

1. At 1064 nm.

2. At 1064 nm, 10 ns.

PHYSICAL CHARACTERISTICS

Aperture width	9 mm
Aperture height	9 mm
Absorber	MT
Dimensions	63.5 \varnothing X 40.6D mm
Weight	0.18 kg



ORDERING INFORMATION

QUAD-9-MT-E

201774

Specifications are subject to change without notice. Refer to the user manual for complete specifications.

INTERESTED IN THIS PRODUCT?

GET A QUOTE

Find your local sales representative at gentec-eo.com/contact-us